

# Felsted Annual Report 1999

By John Drury

## SPECIAL POINTS OF INTEREST IN 1999:

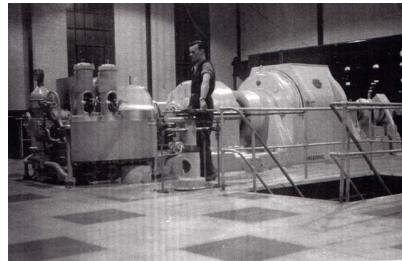
- ➔ FELSTED Sugar Beet Factory
- ➔ Housing Development Generally
  - ➔ The Millennium
  - ➔ History of FELSTED
  - ➔ The Church of the Holy
    - ➔ Village Parking
- ➔ April & May 1999 FELSTED Parish Council Meeting

# Felsted Annual Report 1999

## ➔ SUGAR BEET FACTORY: Before Demolition Day



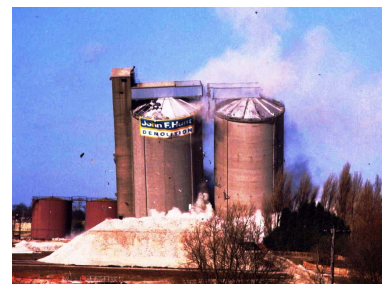
Sugar Beet Factory, 1926



Inside Factory, Late 1940's

## Sugar Beet Factory Demolition Day: 28<sup>th</sup> February 1999

Work had started on preparing the site before the demolition took place. Many locals turned up some were in tears as their memories were being wiped off as they came down.



➤ **HOUSING DEVELOPMENT:**

The number of available plots left within the Development Area is now very small although FELSTED School still have some outstanding permission to develop a few houses on land they own. Two houses are currently being built in part of the Bursar's garden in Braintree Road.

➤ **HOLY CROSS CHURCH:**

The Reverend John Chandler is the new Vicar and he has introduced some changes to bring FELSTED in line with the modern church worship. The Priory Church at Little Dunmow is now under his control.

# Felsted Parish in April 1999

## FELSTED PARISH COUNCIL

MINUTES OF THE ANNUAL PARISH ASSEMBLY OF FELSTED  
Held on 24th April 1998 at 8.00 p.m. in THE MEMORIAL HALL

Present: Chairman Mr. M Collard, Ms. Christine Allison, Curator of Saffron Walden Museum, the Clerk and 27 members of the public

- **Apologies** were received from Mr. & Mrs. A Childs and Mr. G Bellingham-Smith.
- **Minutes of the Annual Parish Assembly** held on the 25th April 1997 were approved and signed by the Chairman as a true record.
- **Saffron Walden Museum**  
An illustrated talk by Ms Christine Allison, Curator of the Museum, proved most interesting and en-lightning to every one present. The Museum, which is the second oldest purpose built building in the country, houses some 160,000 artefacts ranging from Essex farm wagons through an Egyptian mummy to native birds and animals with ethnographic displays from the African continent. Every item was previously painstakingly documented by hand but computerisation has speeded the search time and gives greater flexibility in use. The National Museum of the Year award in Social History was won in 1997 with a prize of £750 which has been used to purchase china objects and to promote the Museum through advertising. The Museum is enjoyed by all age groups who are able to view small objects on screen with the aid of a video microscope. Special events are regular attractions such as the Chinese Textile Exhibition in 1996 and a Clay Day when visitors make their own pottery items. Uttlesford D C provides funding for Day to Day functioning but the Museum Society raises money for special events and promotions. Future aims would be a form of mobile displays travelling to villages where the Museum would provide local history boards which could be used time and again. Interested villages would only need to contact the Curator to arrange a display in their area.
- **Chairman's Report**  
As circulated notes. The Chairman expressed his grateful thanks to Councillors for their support in his first year of office and

thanked the Clerk for all that he does for the Parish and for the Parish Council on a daily basis.

➤ **Clerks Financial Report**

The Clerk circulated a Financial Statement and Summary for the year ending 31 March 1998 which showed a build up of reserves in spite of the legal expenses incurred. He pronounced on the total legal costs for the 4 Parishes involved which amounted to £146,750 but had been reduced to £103,000 through outside donations. FELSTED'S share of this amounted to £41,200 reduced to £35,500 through local donations and fund raising events since the action commenced, a much lower figure than had been anticipated. The final payment, due in October this year, will clear all debts from the action and appeal.

➤ **Representatives Reports on other Bodies**

As circulated reports. In addition, the representative on the Parish Paths Partnership, Cllr. B A Grimshaw, reported that Felsted had joined the scheme at its inception in 1993. Several volunteers meet on the second Sunday of each month to maintain and designate the footpaths in Felsted. Their aim is to complete work on the 40 or so miles of footpath by the Millennium.

➤ **Local Needs**

A suggestion that a light be placed outside the Alms Houses for the benefit of residents was recorded. The need for a central public car park was again raised as also was a mini roundabout at the junction of Chelmsford Road. Concern was expressed over the possibility of construction vehicles passing through the village but Cllr. D Gregory assured the meeting that Berisford's will arrange for their contractors to turn left out of the factory site to use the A120.

➤ **Millennium Projects**

Suggestions put forward from the floor included a flag pole on the church tower, a Village sign and a play area with hard surface for roller blading etc. The Chairman agreed to consider these at the next Council meeting.

The Chairman answered points of general interest and agreed that the Clerk should take up the matter of excessive roller blading in Cressages Close with the environmental department at Uttlesford. Also mentioned was the possibility of providing further play equipment in other parts of the village.

The Meeting closed at 10.35 pm.

Chairman..... April 1999

# Felsted Parish in May 1999

## Felsted Parish Council Minutes

824th MEETING HELD ON 6th MAY 1998 at 7.30 p.m. in THE  
MEMORIAL HALL

Present: Councillors M Collard (Chairman), Mrs. P Gant, Mrs. L M Clark, Mrs. E Read, J Drury, G Bellingham-Smith, J Berry-Richards, B A Grimshaw , D Gregory, R G Smith, and 6 members of the public.

- Mr. R G Smith took the chair and asked for nominations from members for the post of Chairman for the ensuing year. Mr. M Collard was proposed by D Gregory and seconded by J Berry-Richards. The meeting was unanimous in electing Mr. M Collard as Chairman who took his seat to conduct the rest of the meeting.
- Mr. R G Smith was proposed as Vice Chairman by B A Grimshaw and seconded by Mrs. P Gant. The meeting was again unanimous and Mr. R G Smith accepted the proposal.
- Apologies for absence were received from A Warren and County Council member Mr. J Whitehead.
- The minutes of the monthly meeting held on the 1st April 1998 were approved and signed by the Chairman as a true record.

An unprecedented interruption by a member of the public surprised the council. A resident from Players Court demanded an update on the Bottle Bank saga as she had to leave the chamber by 8pm. This was not an agenda item and the Chairman stated that the County Councillors report would be covering this issue.

- Matters arising - Confirming letter should be written to County Highways stating the Council's case for banning HGV's through the village also noting the lack of maintenance to footpath and verges in Chelmsford Road. Copy to County Cllr John Whitehead.
- The minutes of the Annual Parish Assembly held on April 24th 1998 were discussed and approved as a true record for presentation at the Annual Parish Assembly in April 1999.
- Matters arising - It was proposed by J Drury and seconded by D Gregory that the Council takes the initiative in arranging a public meeting on September 16th to further the Millennium celebrations and to finalise the form of a permanent commemorative structure. The meeting was unanimous in

accepting the proposal and asked that every organisation in Felsted be contacted to come forward with ideas for discussion at that meeting. Two items raised at the Assembly will be placed on the June agenda, namely; a light outside the Alms Houses and resurrection of Car Parking in FELSTED. Minutes of the Planning meeting held on April 15th 1998 were discussed and approved as a true record. Two urgent planning matters were referred to the Chairman's session.

- ➔ County Councillor, J Whitehead, had asked the Clerk to report the latest situation regarding improvements to the Bottle Bank and Chippings Bay in Stebbing Road. Instructions had been given to County Highways and Uttlesford District engineers to present plans of the site showing the most suitable placing of the containers, with screening to both sectors, affording the best possible aspect of the site for Players Court residents. District Councillor, A Thawley, reported that Uttlesford had the third best record for re-cycling in the County. The re-cycling manager had more than covered his salary with the savings made in tipping fees.

At this stage the resident from Players Court again invoked a discussion on the Bottle Bank to the further surprise of Council before taking her leave of the chamber.

Appointments and Confirmation of Representatives to the following:

Memorial Hall Committee	Mrs. E Read	Appointed
FELSTED United Charities	Mrs. P Gant	Confirmed to 2001
	B A Grimshaw	Confirmed to 1999
	J Berry-Richards	Confirmed to 1999
Botelers Education Trust	Mrs. P Gant	Reappointed to 2001
	M Collard	Reappointed to 2001
Governor-FELSTED Cty Primary School	B A Grimshaw	Confirmed to 1999
FELSTED & Ford End District Nursing Assoc.	Mrs. P Gant	Reappointed to 2001
Crix Green Trust	Chairman (M Collard)	Ex Officio
	J Berry-Richards	Confirmed to 1999
	D Gregory	Confirmed to 1999
Emergency Planning	J Drury	Reappointed
Dunmow Road Safety Advisory Committee	G Bellingham-Smith	Reappointed
	B A Grimshaw	Reappointed
Footpath Officer	B A Grimshaw	Reappointed
Tree Warden	J Norton (non-council)	Reappointed

- ➔ Councillor D Gregory reported on the meeting which took place between Ms C Craven from County planning, R Harborough from

District planning and representatives from both FELSTED and Little Dunmow Parish Councils which he attended with District Councillor A Thawley and the Clerk. Berisford's have allocated £250,000 for road improvements and traffic calming of which £100,000 would be available before commencing the first stage of development. Discussions took place on the merits of several proposals on the table which included a mini roundabout or part time traffic lights at Throws Corner, traffic calming in FELSTED and many others. It was agreed that the priority has to be the bends at Pound Hill along with a continued pavement from the factory site to meet up with the existing pavement by Dunmow Skips premises. Ms. Craven will look into the technical problems relating to the possible improvements and convene another meeting with the two Parishes in June or July following pronouncement on the A120 dualling proposals.

- ➔ The Clerk had discussed the Church driveway, as it affected the Parish boundary, with the Fabric Officer and agreement was reached to take the driveway up to the Bury Chase car park wall and to re-site the concrete footpath finger post. Following the removal of the damaged section of walling at the south end of the car park members had the opportunity of inspecting the site and generally agreed that a stepped low wall would be more in keeping in a conservation area and that the finger post could be removed entirely as it only duplicated one on the shop corner. It would be necessary to remove the grass verge and to lay hardcore to the driveway level before rebuilding and capping the wall as required. The Clerk was asked to put this matter in hand with UDC contracts that had been responsible for clearing the site of the collapsed wall initially.
- ➔ Cornhill Insurance plc invited renewal of the Council's insurance policy and there was unanimous agreement for the Clerk to pay the sum of £734.93 at the renewal date of June 1st 1998.
- ➔ Clerk's Matters

The following accounts were passed for payment:

£75.00	UDC Rent for Ravens Crescent play area
£17.87	Eastern Electricity - Sports Pavilion Electricity to
April 16	
£43.09	British Telecom. - Memorial Hall Phone bill
£118.34	British Telecom. - Council Phone bill
£158.15	M D Landscapes - Grass cutting Village areas
25/3/98	

£99.98 Club24 Ltd for Staples - Replacement Pay Phone  
for Memorial Hall  
£25.70 Ridgeons Ltd - External MDF Facing for notice  
boards

- Correspondence from Essex CC Highways Uttlesford DC and Essex Police had not satisfactorily addressed their various subjects and the Clerk was asked to enquire of the following: Whether the Causeway End sign could be removed from its present siting outside the telephone exchange. Could Highways be persuaded to improve the signing at the Primary School and obtain sight of the order on tree preservation at Causeway End 2/95 stated to be raised by the end of April.
- Two urgent planning items were discussed under Chairman's matters. Firstly, the revised plans for Phase One Stage One of the Sugar Beet Works redevelopment which prompted no viable comments other than to set back the low density houses from the road. Secondly, the Bungalow proposed on the old garage car park site, at the end of Bury Chase, had objections on the grounds of overcrowding, loss of village open space and detraction from view of the church and village, being adjacent to the conservation area containing a number of Grade 1 & 2 listed buildings and finally, the plan provided shows the building line protruding beyond that of other properties in Station Road. A site visit is to be recommended to the DC sub-committee.
- Date of the next monthly meeting:  
  
3rd June 1998 in the Memorial Hall.
- Date of the next Planning meeting:  
  
20th May 1998 in the Memorial Hall.

The meeting closed at 10.20 p.m.

Chairman.....  
3rd June 1998