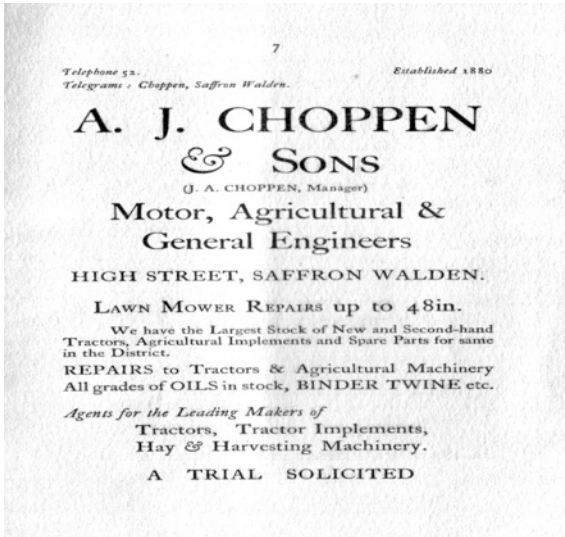


## SHOP ADVERTS

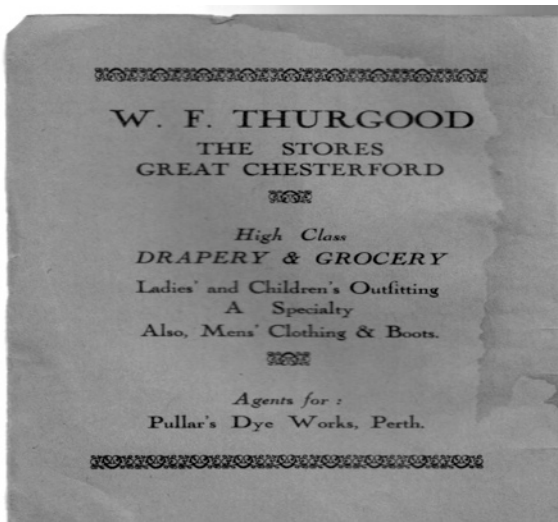


The **Choppens** lived in Gt Chesterford and had a workshop in Little London, a row of cottages behind Carmel St.

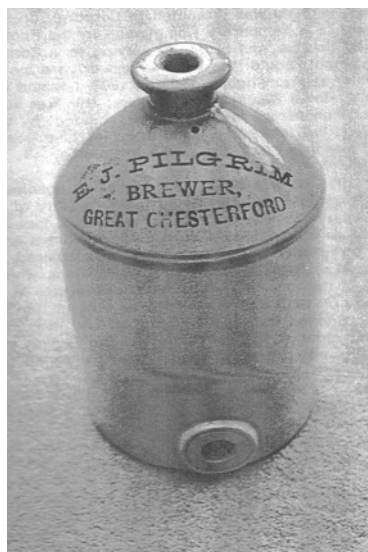
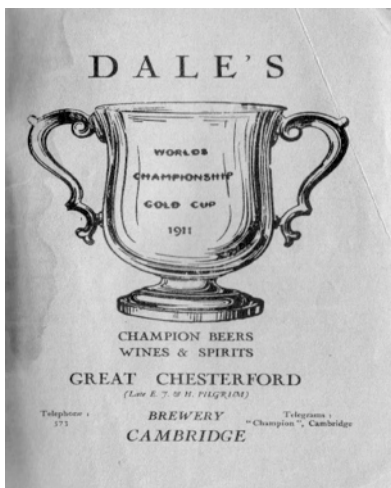
Below is a picture of the Choppens in their pony and trap outside Garden Cottage, Carmel St.

**Holmans** was an up-market family store on School St where you could have suits made-to-measure, and which had a wonderful Christmas display. The building is still the village shop and Post Office. They sold just about everything – in the days when the village had several shops ranging from harness-makers to shoe repairers. It was one of two grocers, the other being Thurgoods.



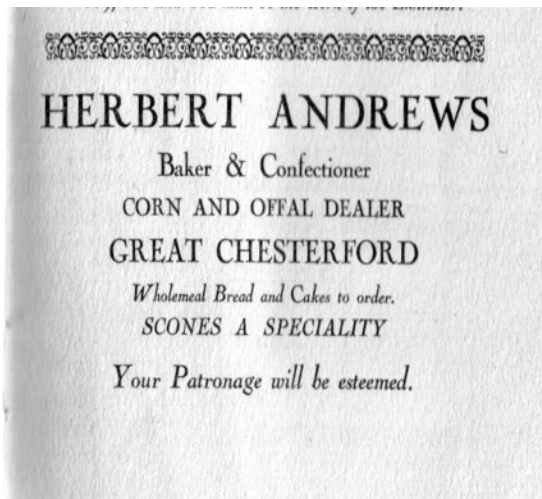


**Thurgoods** was on St John's Cross and is now a private house.



**Dale's Brewery** originally belonged to the **Pilgrim Family**.

When the brewery closed it was taken over by **Dunlop**, the sportswear manufacturer, then by **Swaine, Adeney** who continued to manufacture in the village after moving to a new factory near the station. The brewery buildings fell into a state of disrepair and were eventually demolished to become part of the garden of The Close.



**Herbert Andrews** baked bread here until 1952 – known as the ‘midnight baker’ because he worked long hours. Like all the village bakers he got his flour from King’s Mill down by the river. On Sundays he would cook joints in his oven for other people.



# C. F. SEARLE

*Pastrycook and Confectioner*

GREAT CHESTERFORD

All kinds of French Pastries supplied on the shortest notice.

Christening, Birthday and Bride Cakes made to order.

Try the Noted Wine Cakes and Sandwiches.

Best Household and Wholemeal Bread.

Dinner Rolls to order.

*Baker of the Celebrated Hovis Bread.*

*Families Waited upon Daily. A Trial respectfully solicited.*

**Charles Searle** had the biggest bakery in the village on Carmel St. In 1937 it was taken over by Mr Bert Cole who still has a bakery near



# J. BARRETT

*Family Butcher*

CARMEL STREET

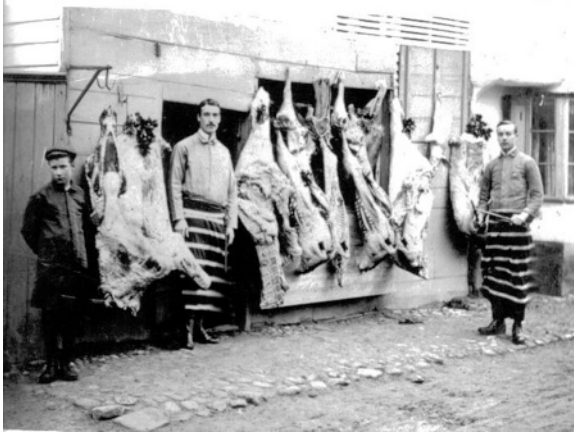
GREAT CHESTERFORD

HOME-KILLED MEAT

Families Waited upon Daily. One Quality only—the Best.



**Jack Barrett's** butcher shop had its own abattoir round the back. The shop itself is now a private house known as Cleavers Cottage.



Barrett's in the 1920s



*W. PEPPERCORN*  
JULY FARM  
*GREAT CHESTERFORD*  
New Milk  
Fresh Eggs  
Families waited upon Daily.

**Mr Peppercorn** started a dairy herd and milk business here in 1925. Mrs Peppercorn kept chickens.



**Perry's** was another dairy in Carmen St, in what is now Littlemead. The house had previously been **Machon** the butcher's.



W. PERRY & SON  
*Dairymen*  
CARMEN STREET DAIRY  
GREAT CHESTERFORD  
*NEW MILK & EGGS*  
Families waited on Twice Daily

Why put up with Poor Coal when you can  
get the BEST COAL at Popular Prices at  
**HILL'S**  
Coal and Coke Merchant,  
GREAT CHESTERFORD  
Horse and Wagonette for Hire. General Carting,  
etc.



**Frank Hill** was the landlord of the Elm Tree Pub on Church St and also ran a coke and coal business. He was also a carrier and ran a courier service to Saffron Walden on a Tuesday.

The Old Elm Tree

Why is your husband like a Fire ?  
Because if he is not looked after he'll  
go out.

Therefore to ensure keeping a good fire  
have your COAL from

**ROBERT SHARPE**

*General Carting Done.*

**Robert Sharpe** ran another coal and  
carting business

**REFUGE ASSURANCE  
Company Ltd.**

OXFORD ST., MANCHESTER

1. Annual Income - - £8,800,000
2. Total Assets - - £35,958,048
3. Claims Paid exceed - £49,415,478

The above Company are now issuing First Class  
Investment Policies.

*For Full particulars apply :*

**F. CHAMBERS (Agent)**

St. John's Cross, Great Chesterford.

31  
*A. S. ABRAHAM*

*Carpenter, Wheelwright and  
Undertaker*

HIGH STREET  
GREAT CHESTERFORD  
ESSEX.

**JAMES BARRETT**

*Newsagent and Bookseller*

HIGH STREET  
GREAT CHESTERFORD

Orders received, and delivered at the shortest  
possible notice for all Dailies, Periodicals and  
Magazines, etc. Deliveries Daily.

**James Barrett** ran  
his newsagency  
from Mount Cottage  
on South St.

Much of this information was taken from the Chesterford Local  
History & Archaeology Society Interim Report No 16 –  
Commerce in Great Chesterford 1900-1950 by Ian Deatker.  
The adverts came from a Horticultural Society  
Programme for 1927.